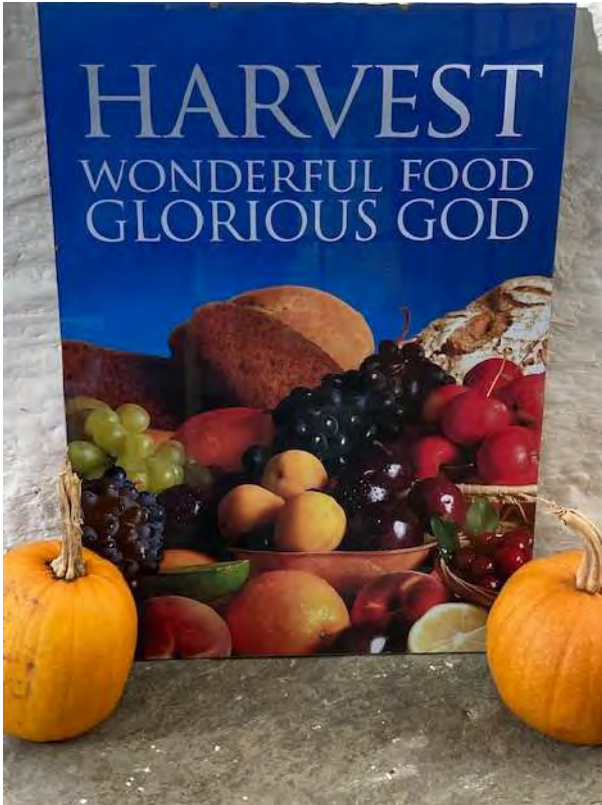


# Parish Magazine November 2020 Online Extras



## *St Peter's Harvest Decorations*







**South Hams**

## **Coronavirus Update**

### **Face to Face Services Suspended:**

We have taken the decision to suspend our face to face services in light of the Coronavirus outbreak. Therefore we are not currently offering advice to the public from our offices or outreach. We apologise for any inconvenience. We would like to reassure you that our staff and volunteers continue to work behind the scenes and we are able to offer support in the following ways:

Adviceline\*: 03444 111 444 (Monday - Friday 9am - 4pm)

Email: [www.southhamscab.org.uk](http://www.southhamscab.org.uk)

From the 'Contact us' page select 'Email' and click 'Use our online form'

WhatsApp: 07497 758779

Self Help: [www.citizensadvice.org.uk](http://www.citizensadvice.org.uk)

Letter: Citizens Advice, Follaton House, Plymouth Road, Totnes TQ9 5NE

Our paid staff and volunteers are doing all they can to keep our service operational. However we expect that you may experience a delay before your enquiry is responded to. We apologise for this and hope you will bear with us during these unprecedented times.

**Janie Moor**

Chief Officer

Citizens Advice South Hams

**FUEL VOUCHER SCHEME (until 23rd November 2020)**  
Citizens Advice can provide fuel vouchers (£28 or £49) to help vulnerable households with pre-payment meters struggling to afford to 'top up' and at risk of self disconnection.

**Do you have a pre-payment meter?**

**Have you been affected by COVID-19? (this means households experiencing increased vulnerability due to the virus or its wider economic and social impacts)?**

# Stay Well This Winter

The winter months can be seriously bad for our health, especially those of us aged 65 or older as well as those individuals with long term conditions such as such as diabetes, heart disease, COPD, kidney disease, asthma, bronchitis and a range of other chronic illnesses.

It is important to stay warm as the cold can raise the risk of heart attacks, stroke and high blood pressure. The winter can aggravate existing health conditions and make us all more vulnerable to respiratory winter illness; however there are lot of things we can do to protect ourselves.

## **Make sure you have your flu jab if eligible**

It is important you have your flu jab as flu can be far more serious than a lot of people think. You are entitled to a free flu jab if you are:

- Aged 65 or over
- Pregnant
- Suffering from a long-term condition
- Have a BMI over 40
- Are a carer
- Living in a long-stay care facility

Contact your GP surgery how to get a flu jab this year as a national delivery schedule change has caused some delays.

## **Feeling Unwell? Why wait – get advice sooner rather than later.**

Act quickly - the sooner you seek advice about the first signs of a winter illness the quicker you can treat before it becomes more serious.

There are various ways in which you can seek help when feeling unwell, these include: contacting health professionals and taking steps yourself to ensure you get the best help quickly:

### **1. Pharmacists**

Pharmacists are fully qualified to advise you on the best treatment and action plan to help you recover and get back to normal. Remember, if you cannot get to a pharmacist yourself ask someone to go on your behalf, or even given them a call.

### **2. Your GP Surgery**

You will be able to speak with a GP or health professional over the phone who if needed can get you seen.

### **3. Call 111**

Visit [111.nhs.uk](http://111.nhs.uk) or call 111 if you have an urgent medical problem and you're not sure what to do

The sooner you get advice, the sooner you are likely to get better.

## **Check your medicine supplies**

Ask your local pharmacist what medicines you have should have a supply of at home to get you and your family through the winter months. Most winter illnesses can be treated at home with over the counter remedies, it is advised that if you are managing an illness at home you and your family follow the steps below...

- Rest
- Drink lots of fluids
- Have one hot meal per day
- Use over the counter medications

### **Remember to look out for people**

Look out for other people such as neighbours, friends and family over the winter months. Those who are frailer need a little more help with getting out and about, or may need to be reminded to collect things such as prescriptions or food supplies if bad weather is forecast.

### **Finally, remember to keep yourself warm**

Keeping warm inside and out over winter is important as it prevents cold, flu and more serious problems such as heart attacks, strokes, pneumonia and depression. Remember wearing several layers can be more effective than one bulky layer.


Homes should be heated to at least 18 degrees, with main living spaces being warmer if possible. Windows should be closed at night, especially in the bedroom as breathing in cold air is bad for your health.

Make sure you are receiving all the help you are entitled to when heating your home over the winter. The government website [gov.co.uk](http://gov.co.uk) has information available to ensure that you are as energy efficient as possible.

In summary...

5 things which can help you to stay well this winter are:

1. Speak to someone if you start to feel unwell
2. Make sure you keep an eye out on those vulnerable people around you
3. Have your flu jab if eligible
4. Keep your home heated to 18 degrees as a minimum
5. Look into financial schemes to help you heat your home

Put a  on a child's face and a warm feeling in

your  by leaving a



under our 

All the  will be

donated to local families via

**TOTNES CONNECTION HUB**

[www.totnesconnectionhub.co.uk](http://www.totnesconnectionhub.co.uk)

please indicate on the present if it is for a boy or girl and the age range

To allow time for the presents to be sorted and distributed in time for Christmas the last collection will be

**MONDAY 14TH  
DECEMBER**



**print&design**

**01803 431 410**

[adrian@tqprintanddesign.co.uk](mailto:adrian@tqprintanddesign.co.uk)

[www.tqprintanddesign.co.uk](http://www.tqprintanddesign.co.uk)

Unit 1, 7 The Plains, Totnes TQ9 5DR

Please help to support this appeal from TQ Print and Design, Totnes. They have been printing the magazine for many years and are more than generous with their time helping in production!

# **Needed:**

**Somewhere to live that isn't damp  
and mouldy.**

**One of our clients who uses our  
showering and clothes washing  
facilities moved to Totnes a year ago  
and started 'in the gutter'. He moved  
into a tent and then a car and now a  
caravan.**

**BUT the caravan is  
damp and mouldy. He would really love  
a DRY CARAVAN TO CALL HOME.**

**Do you have a caravan that you no  
longer use?**

**Our client has permission to have one  
on the site he uses and if someone  
found one for him, he would  
need it to be towed there for him. Also,  
a wood burner as being warm is very  
much part of feeling at  
home.**

**THANK YOU!**

**01803840354**

**info@totnesconnectionhub.co.uk/**

**message on FB**

# Parish Magazine

## Ashprington Cornworthy Dittisham

### November 2020

## Ash Dieback



You may have noticed the gradual appearance of red crosses on ash trees along highways over the last few months. These are trees that have become a hazard because of Ash Dieback and Devon County Council Highways Department will be felling many of these trees over the winter period. Other trees not on highways land that look in the same condition will not be marked. The felling of these ash trees will be the responsibility of the landowner.

Devon has seen a massive increase in Ash Dieback this summer with the South Hams, West Devon and Mid Devon seeing the worst outbreaks. The situation is expected to worsen next year. Ash is also prevalent in our hedgerows and these will also be affected. As a consequence we can anticipate that our landscape will alter radically over the next few years.

### *So what can we do to help?*

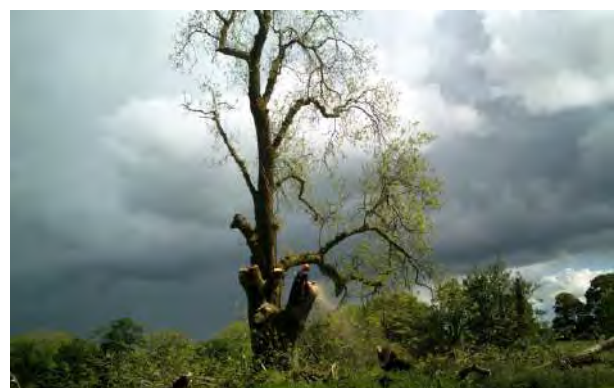
Firstly we need to act now to minimize the landscape impact of ash tree loss. We should start promoting new trees and taking better care of existing ones. A small percentage of ash trees will be found to be resistant, or partially resistant, to the disease and scientists are also trying to breed

genetically resistant ash. But with an expected 90% of ash likely to be affected the Devon Ash Dieback Resilience Forum (DCC, Wildlife Trusts, Farming Organisations, Hedgelink, National Trust to name a few) have been working on a plan over the last 3 years to suggest ways to reduce the disease's impact.

The group's main request is to ask that everyone uses the 3/2/1 formula. If any of your diseased ash trees (or any tree) needs to be felled: then can you plant at least 3 new trees for the loss of a large tree, 2 for a medium tree and 1 new tree for a small tree. It is also suggested that we should promote natural regeneration wherever possible, particularly in copses and woodlands. But everyone agrees that this will not be enough on its own. We have to make sure we build a more resilient landscape with a diverse range of trees as there are other diseases that are expected to arrive over the next decade.

It is estimated that 75% of organisms that live in ash trees can also live in the sycamore, a tree that is usually uprooted and cast aside as a nuisance and weed, but this species could offer a lifeline for those organisms that lose their natural home. Aspen, alder, field maple, birch, rowan and the new disease resistant elm, along with native oaks have similar traits to ash and could join the mix. Other options for wildlife, landscape and wood fuel are wild pear, crab apple or white willow. Unfortunately the 25% of creatures that only live on ash will probably die out to add to the general loss of biodiversity on the planet.

However this does not answer the main question for anyone with an ash tree on their land - what should I do? The Tree Council has published an excellent document on line which you can download. Enter [www.treecouncil.org.uk](http://www.treecouncil.org.uk). Select *Science and Research*. Then select *Ash Dieback* and scroll down to *public guidance*. This document has all the information that you need and explains your responsibilities. The SHDC website [www.southhams.gov.uk](http://www.southhams.gov.uk) also has information specifically about trees. Search *Ash Dieback* and you will find a page focusing just on this disease; enter *tree maintenance* and you will find who is responsible for any tree; enter *protected trees* and you will find rules pertaining to all trees.



# About the Magazine

If you would like to receive the Parish Magazine please contact the distribution organiser for your village:

Ashprington: Mr. G Gillespie 01803 731071  
Cornworthy: Mrs. S. Stevenson 01803 732301  
Dittisham: Mrs. P. Bennett 01803 722307

If you would like to contribute any article, announcement, announce an event or sell household articles please contact the editors:

Kathi and Laurence Green  
8 Holly Villas Ashprington TQ9 7UU  
Telephone 01803 732437  
Email [kcgreen@supanet.com](mailto:kcgreen@supanet.com)

Rates for advertisement:

Small ad: £10/ one month  
£25/ three months  
£40/ six months  
£75/ one year  
Large ad: £12/ one month  
£30/ three months  
£50/ six months  
£85/ one year

Extra-large ad: £150/year

If you would like to place an ad in the magazine please contact Henry Trollope for further details and payment. Design your own ad or send the required text by email or post to:

Henry, 6 Jaspers Cottages, Cornworthy, TQ9 7EY.  
Email: [henryandkatie@btinternet.com](mailto:henryandkatie@btinternet.com)  
Telephone: 01803 732 267

## December Magazine:

Please try to have all copy to the production editors by the 18th of November for the December magazine. Thank you.

### This Month's Magazine....

Just over 40 subscribers have chosen to receive the magazine online. It is easy to supply the magazine both in paper copy and online if you require. As well as saving paper an online magazine is in colour and some articles and the Parish Council reports are more detailed.

In order to prepare a budget for 2021 and set the subscription charge I will need to know if any more readers would like to choose the online option. So please email or telephone if you would like to change to online. Thank you, K Green

## We will remember them.

### *One Thousand Men Are Walking*

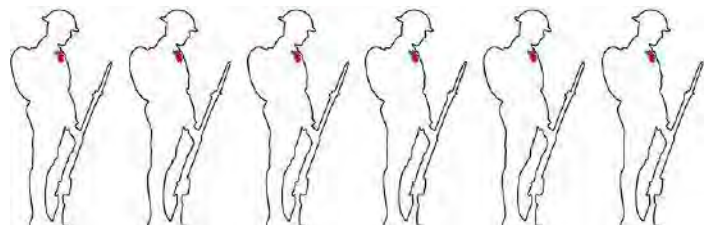
One thousand men are walking  
walking side by side  
singing songs from home.  
The spirit as their guide,  
they walk toward the light milord  
they walk towards the sun  
they smoke and laugh and smile together  
no foes to outrun.

These men live on forever  
in the hearts of those they saved  
a nation truly grateful  
for the path of peace they paved.  
They march as friends and comrades  
but they do not march for war  
step closer to salvation  
a tranquil steady corps.  
The meadows lit with golden beams  
a beacon for the brave  
the emerald grass untrampled  
a reward for what they gave.  
They dream of those they left behind  
and know they dream of them,  
forever in those poppy fields  
there walks one thousand men

*Joshua Dyer 2019 (aged 14)*

Joshua Dyer is from Leominster, Herefordshire and attends Tenbury High Ormiston Academy in Tenbury Wells, Worcestershire. Since the release of the poem Joshua Dyer has received a letter from the office of The Duke of Edinburgh thanking him for "producing such a moving and heartfelt piece of creative writing". Joshua has also attended BBC Hereford & Worcester to pre record for the Sunday Show and received offers from RAF High Wycombe and the NHS Mental Health Veterans' Conference in Lincoln to read out his poem for Remembrance.

Go to [www.forces-war-records.co.uk](http://www.forces-war-records.co.uk) to thank the family of Joshua for allowing us to share this heartfelt poem on our website and would like to congratulate Joshua on this fantastic and beautiful tribute to those who have served and fallen. We hope that this poem is read at Remembrance Services across the world; thank you Joshua.



# Secret Saint Mary's

**St Mary's church in Totnes** has a long and venerable history. It stands on the site of an original Norman church and was rebuilt in the 15th century. The building contains many interesting and unusual artefacts and treasures that might normally be unseen or hidden from the sight of visitors. These objects tell a fascinating and intriguing story to all who choose to seek them out.

Investigation has uncovered a large number of ancient witch marks, graffiti and patterns carved into the side chapel surfaces and areas not usually seen - this book will help find them!

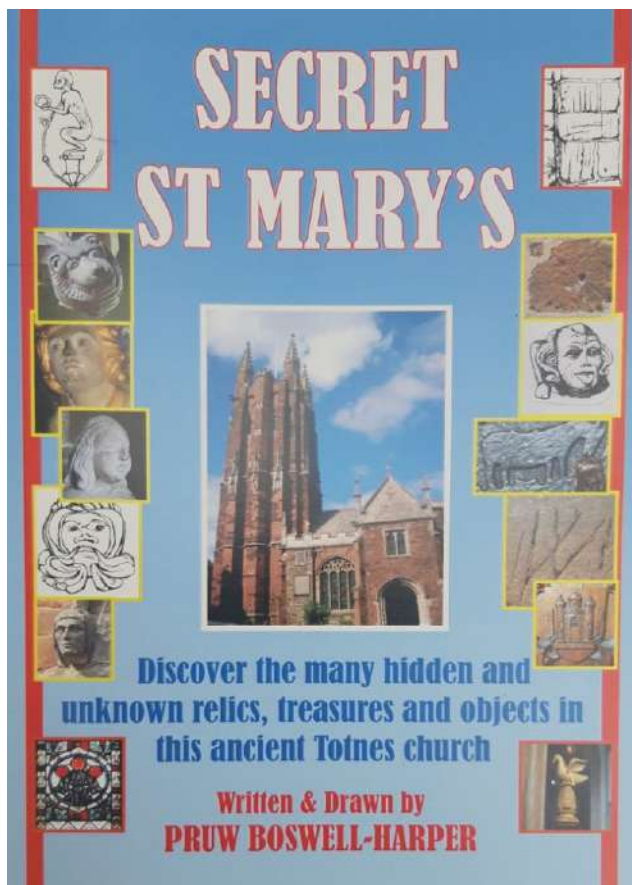
Former Totnes Mayor Pruw Boswell Harper is a leading authority on St Mary's and has just written a new book about it, telling the stories behind these objects and illustrating them with photographs and drawings. Together with a 'map' of all the 'secret' sites, it forms the basis of an absorbing walk, both inside and outside the building.

These booklets are on sale in St Mary's for just £3.00 each in aid of the St Mary's Tower Appeal. Visitors to St Mary's should pay cash into the red Friends of St Mary's shop collection box, which is situated in the Shop area on the LEFT hand side of the main entrance.

It is also easy to order online via the link below:

<https://form.jotform.com/202962457389064>

St Mary's is currently open from 11am - 1pm except on Mondays. However, from next Tuesday, it should be open from approx 9am - 4pm every day except Sunday and Monday. Pruw will be in the church from 11 'til 1pm on Tuesdays.



## How Did This Happen?

The present pandemic is rather like a war in two ways. Nobody knows when it will end and it kills in a random way. The First World War was succeeded by the Spanish Flu which killed more people than four years of industrial killing. Epidemics and wars kill those who least deserve to die.

An example of this is George Butterworth, the most promising young composer of the early twentieth century, friend of Ralph Vaughan Williams and Cecil Sharpe, and reviver of morris dancing and collector of ancient folk songs.



*5th August 1916*

We hear Lieutenant Butterworth's gazetted dead  
A ruddy German sniper shot him in the head,  
Then Fritz, the music loving 'Hun'  
Packed up his kit; the job was done.  
We buried George in clay of France  
Far from the lads who led the morris dance.  
He did his bit with whistle, gun and bomb  
To throw the Germans off the Somme.  
No more will music fill his head,  
Only a greasy lump of German lead.  
His like will never live again  
There's no more music in the fellow's brain.  
The war's been on two years, one day  
It could go on for ever, so they say...

A few years ago a good friend of mine, an atheist, said to me, standing on a road south of Arras: 'How can you believe in a God that let this happen?' This was a sincere question and one I think about constantly.

God hates war and human folly. He grieves at every unnecessary death, even that of a sparrow falling from the sky. God was profoundly sad when the enemy sunk HMS Hood in 1941 with only three survivors. He was equally sad when the Royal Navy sunk the Bismark with an even greater loss of life. God loves us all, whether we have '*Gott Mit Uns*' on our belt buckles or '*Honi Soit*'.

He sent his son Jesus to show us how to live and to die for us. Through the Holy Spirit we are given grace to learn from our mistakes and follow God's way. When we turn our back on God through greed, lust for power, or the giddy pursuit of selfish pleasure, God does not turn His back on us. The parable of the Prodigal Son shows us that God's love is constant and unconditional. If we choose to ignore it then wars are inevitable. If we do not love God we do not love our neighbours or, ultimately, ourselves.

Let us pray for grace to follow God's path that He so clearly indicated

*Laurence Green*

# Ashprington News



We all wish Simon, our churchwarden emeritus, a full and speedy recovery. We look forward very much to his taking Village Worship again in his inimitable way. He is making a good recovery at home.

Harvest Festival was different this year because we were not allowed to decorate the church. So we decorated the lych gate. During the Village Worship service Sally Ware and Jonathan Leigh, both members of the Community Choir, sang harvest hymns for us. We thank them for their beautiful singing and look forward to hearing them at Remembrance Sunday. Ashprington people gave very generously to the Food Bank; a car full of provisions was taken to the Connection Hub Food Bank.

Village worship was also the order of the day when Rev'd. John Luscombe developed a temperature and was unable to take the Holy Communion service. Aably supported by our friends from Cornworthy, Richard took the service and Laurence gave the talk. Liz, our organist, played a beautiful piece at the end of the service which was enjoyed by everyone.

The 'Build a Vicar' course, led by Jill George, is very successful and well attended. Some very frank views were aired and lively discussions followed.

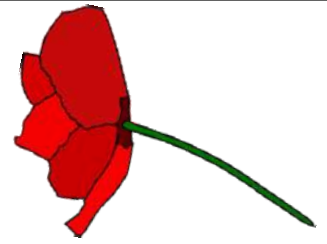
In these trying times change is in the air. It is up to us to make sure that the new opportunities available to us are discussed and acted on as often as possible. Our friends at Cornworthy are setting us a very good example by their imaginative celebration of Village Worship. If you haven't yet joined in with their worship at St Peter's you've missed a treat.  
*Laurence, Churchwarden*



**Thank  
you  
for  
all  
donations.  
Bonita  
at the  
Food  
Bank  
was  
astounded**



**Remembrance  
Sunday  
8th November:**



**Meet at the  
War Memorial  
at 10:50am  
for Act of Remembrance.  
Informal service of dedication in  
St David's Church**

**follows at 11:15am  
ALL WELCOME**



**Distancing and face  
coverings  
will be appreciated.**



## *The Sharpham Trust receives lifeline grant from Government's Culture Recovery Fund*

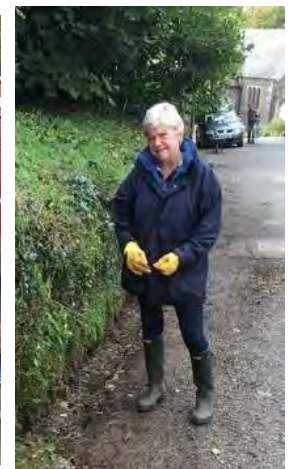
The Sharpham Trust is one of 445 heritage organisations across the country set to receive a lifesaving financial boost from the Government to help them through the coronavirus pandemic. The Sharpham Trust has been awarded £98,000, which will help the nature and mindfulness education charity continue to operate.

The Trust offers mindfulness retreats and courses, puts on nature-connection events, offers weddings and operates Sharpham Meadow Natural Burial Ground. Like many organisations and businesses, the Trust has been severely impacted by the restrictions imposed as a result of Coronavirus.

Julian Carnell, Trust Director, said: "We have been operating at a much-reduced capacity as a Covid-Secure venue. This latest £98,000 grant from the government through the Culture Recovery Fund for Heritage is very welcome. Despite losing around 50% of this year's income I am proud that we have been able to keep all our staff employed and continue to support our users in the face of severe challenges."

# Photographic evidence shows:

.....that you can make a difference. First picture shows Freddie Gest, retired farm worker who lived in either 4 or 5 Holly Villas in the early '50s clearing up Duncannon Lane. Second picture shows Laurence clearing snow from the north parapet of the Church before it melts and flows under the slates after the Beast from the East. Third and fourth pictures show 3 feed sacks of rubbish (including a gent's pants and socks) bravely cleared from the road to Totnes by Kathi, Nick and Pam on a Wednesday morning in August. Last picture shows a spanking clean drain cleared by Pam and Nick after a heavy rain left it full of stones, leaves and silt just the other day. So.....



## Invitation to all readers:

..... please send in any pictures or stories of sundry grot uncovered, cleared away and the countryside improved. These stories illustrate minor heroics in the village, cheer up the magazine content and definitely keep our villages a firm part of the AONB (Area of Outstanding Natural Beauty). Go for it.

## Rowcroft Hospice Light up a Life this Christmas Make a dedication in memory of someone you love

As Christmas fast approaches, we look back on a year that's been unimaginably hard for so many people, and particularly for those who have lost loved ones. For families bereaved, Rowcroft Hospice teams have been helping to make the darkest of days just that little bit brighter, by offering much-needed care, comfort and emotional support.

Bereavement and grief touch us all, and we often feel our loss more at Christmas-time. That's why, every December, Rowcroft holds a 'Light up a Life' celebration – open to everyone in the community as an opportunity to honour, remember and celebrate the lives of our loved ones lost.

### Dedicate a light to celebrate your loved ones

As part of our 'Light up a Life' celebration, we invite you to dedicate a light on our 'Tree of Light' in memory of those special people who shine brightly in your heart, and who are truly missed every day, especially at Christmas-time. Your dedication will help Rowcroft to care for local patients with life-limiting illnesses and their families – people who are facing their darkest and most difficult days.

On Sunday 6 December at 5pm, as part of our 'Light up a Life' celebration, your light will be illuminated on our spectacular 25 foot Tree of Light situated in Rowcroft Hospice's beautiful, peaceful grounds. You can view the illumination online at [www.rowcrofthospice.org.uk/light](http://www.rowcrofthospice.org.uk/light) and you are warmly invited to watch our virtual celebration. At any point over the festive season, we'd love you to visit our magnificent Tree of Light in our stunning hospice gardens (Rowcroft Hospice, Avenue Road, Torquay TQ2 5LS). Take time to wander, or to simply sit and reflect.

If you would like a Rowcroft Star to personalise with the name of your loved one to display on your Christmas tree, complete the request details on the Light up a Life dedication webpage.

Visit [www.rowcrofthospice.org.uk/light](http://www.rowcrofthospice.org.uk/light) to make your dedication, request a Rowcroft Star and take part in this year's Light up a Life celebration. Telephone: 01803 217450

# Dittisham News

**St George's Church:** At our Harvest Thanksgiving Service on October 11th Penny Matthews led us and her words really resonated with me. She talked about the Church Year and how it is predictable, routine, safe and it allows us to ground ourselves in the inevitability of the festivals. She went on to say that this year has been anything but settled and predictable and yet there we were arriving again at Harvest Thanksgiving and we could feel secure in the normality of the season.

The church porch was bursting at the seams and resembled a grocery store - a heartwarming sight that reflected the great generosity of the village. These festivals bring a sense of continuity to our lives, maybe they remind us of our childhood, of happier times maybe! Life may never be the same but our church is still there calmly waiting for us, a haven of peace; somewhere to sit and remember past generations of worshipers, and to pray for the future generations.

Autumn really is upon us now. Bulbs are being planted - surely Spring cannot be so far away. Rotary is donating 900 crocus bulbs to the village as Rotary worldwide has been campaigning to help to eradicate Polio throughout the world for 10 years and has almost succeeded. Africa has recently been declared free of the disease and it is no longer in India but still in Afghanistan and Iran. The symbol of the effort is the purple crocus and Dartmouth Rotary has been planting corms in Dartmouth for some years. It is great that Dittisham, Stoke Fleming, Kingswear and Stoke Gabriel are now to be part of their planting programme. Who will spot the first little crocus peeping through in 2021?

We are so lucky to have a wonderful seamstress in our community. Tricia has generously donated her time, skill and a fantastic set of curtains to replace the rather sad one that has hung in front of the organ in St. George's for many, many years. A huge thank you to Tricia from the whole congregation. That little corner of the church looks loved.

The funeral of Lady Pam Dormer, a resident of the village for many years, was held at St. George's on Tuesday October 20th. It was a dry day fortunately and the family had a beautiful service led by Andrew. Words written by the family, "A life well lived", are included in this issue of the magazine.

We continue to be grateful to our clergy for bringing us a variety of services of worship, now including two acts of worship during the week on alternate Tuesdays, one of which is Holy Communion. The service on the third Sunday will vary slightly each month, so far we have enjoyed Matins from the Book of Common Prayer, sadly with no singing, but we are still enjoying Robin's organ playing. We are looking forward to the candlelit Evening Prayer at the end of November to celebrate the beginning of Advent.

Charlotte



## Pamela Joan Simpson

**17 June 1925 – 4 October 2020**

Pam, as we all knew her, and her late husband Geoff dropped anchor off Dit'sum in August 1960, gazed at the cottages and wondered which one was the home they had bought unseen as they journeyed back from France in their yacht "Awará". Billy was born three months later, followed by Richard four years later.

Pam was devoted to her family and watched over Bill & Richard as they made their way in the world. Whatever their issues, Pam was always there and was annoyingly, Bill says, always right!

Pam lived for 60 years in the Dit'sum family, putting the needs of others before her own, with never an unkind word spoken, and always a smile and a gentle laugh. She never complained. Pam was stoic until the end. A life well lived!

*The full eulogy may be found in the online magazine on the Dittisham website.*

### Dittisham Village Hall Management Committee A.G.M.

**Due to Covid 19 the delayed AGM from July is due to be held by Zoom on Wednesday 9th December 6.00 p.m.**

**If you wish to join the meeting please email the Secretary a week before the meeting. Written reports, accounts and agenda will be sent by email. A link will be sent inviting you to join the meeting.**

**Jane Milton (Secretary) Email:  
jane@milton.me.uk  
(Registered Charity Number 285469)**

# Cornworthy News

**St Peter's Church** At our APCM we acknowledged Sue Stevenson's 50 years of service to the PCC - right from her early 20s! During that time she had fulfilled many posts and latterly the daunting task of Treasurer. Sue has been stalwart in her support of St Peter's throughout and we are very grateful to her for all her years of hard work and expertise. Her experience of all things "church" continue to be much valued. Tania Jones, while remaining on the PCC, felt ready to resign after 15 years of making sure that St Peter's is fully operational and engaged with the community. We have very much missed her splendid talents catering for the church during this pandemic, but we are assured she will be keen to return when all this is over. The PCC and the village have reason to be very thankful for all she has done as Churchwarden and continues to do as a pastoral carer and general factotum.

It is also time to mark the death of Tony Hillier and all the many years both he and Pat gave to the smooth running of St Peter's. Their generosity of spirit and support of the village was exceptional and they are both greatly missed. By the time you read this Tony's funeral will have passed and he will be with his beloved Pat.

Harvest Festival, though not so well attended, was successful and the flowers were a joy. Thank you everyone. We raised £84 for Shelterbox and collected a huge amount of provisions for the Food Bank. A big thank you to everyone from St Peter's and Liz Waterson who delivers from all the churches to the Bank.

We have recently received a generous gift of 13 Hand Bells - from an anonymous donor. Elizabeth Sherwood and her team are now regularly practising, all at a safe distance etc., at St Peter's and it is bringing much joy. Please Elizabeth or Paul Hunt if you wish to join in. Hand Bells will be rung at Christmas as a worthy substitute for their cousins! (Because of the 2 m distancing it is not possible to ring our bells) Plans are being made for the Christmas season and more will be revealed in our December Newsletter.

Remembrance will be observed by our usual service with John Luscombe on Sunday, 8th November. We can accommodate 30 people so please do not hold back. We are well-spaced and it is a safe environment. Come warmly dressed as, because our new heater is so efficient it recycles the heat, so we can only have it on before the service. A bit of a "blow" after all that trouble getting it installed and approved!!

Jesus said: Recognise that which is before your face and that which is hidden from you will be revealed to you.

There is nothing hidden that will not be manifest. (from the little known Gospel of Thomas).

*Keep safe, Caroline, Churchwarden*



Jack with his creation of Paul and him going up the church spire.

Handbells !

All 13.



More of the Harvest flowers to be found in the online edition (website)



## Tony Hillier 1931-2020

Tony was born and brought up in Bath where he gained a scholarship to the local grammar school at which he represented the school at cricket. On leaving school he became an apprentice electrical engineer in the R.A.F. There followed thirty six years in government service as a radio technical officer, a chartered engineer and finally deputy chief telecommunications officer at Heathrow airport and a fellow of the Royal Aeronautical Society.

Tony's faith has always been very important to him and through it he met his beloved Pat. When he retired in 1993 they moved to live at Willow House in Cornworthy. They joined the Methodist chapel and attended regularly and faithfully over the years. Tony helped to run the services and became a steward. When the chapel sadly closed in 2005 Tony supervised the sale of the chapel and the Wesley Hall. He and Pat then came up the road to St. Peter's church where they entered fully into church life hosting fundraising coffee mornings in their own home and supporting any events in the church. Over the years Tony took on the responsibility

of both treasurer and church warden in 2007.

Locally Tony was president of the Rotary Club and gave ten years voluntary service to the Citizens Advice Bureau. He was a supporter of the Harbourne Shuttle and used it regularly to go shopping in Totnes. Despite one or two health scares...stents fitted in 2012 and having a kidney removed in 2013.... Tony continued to play an active part in village life and always said how much he had enjoyed his retirement in Cornworthy.

Tony missed his beloved wife, Pat, following her death and we can only feel pleased that they are now reunited in the peaceful surroundings of St. Peter's churchyard.

*God bless you , Tony,.... We miss you...*

### Christmas trees for sale!

Locally grown Normann & Frasers firs..

Competitive prices..

Can deliver or  
come and choose your own..

Contact

Rebecca Stevenson

07963960611



### Cornworthy Christmas Message Board

Included with this magazine is an A5 sheet for you to use to write your greetings to other villagers and instruction on how to contribute to Children's Hospice SW.

Please return your sheet to Chris Hunt  
(01803 732 851)

The message board will also be posted in the online edition of the December magazine.

Each year this raises several hundreds of pounds for the charity



# Notice Board

## West Dart Community Bus Services & Vacancy for a Trustee

We are pleased to say that The West Dart Community Bus is able to offer a limited service, subject to sufficient demand. All scheduled trips are free until the new year. Face coverings are required for travel and bookings are essential. Please call 01752 690444 to book; at least 24 hours prior to the service.

The Dartmouth Service operates every second week. Next services Friday 13 & 27 November.

The Newton Abbot (& Totnes by request) service runs on the last Wednesday of the month.

Next service 25 November.

Vacancy - The West Dart Bus is now managed by the Ivybridge and District Community Transport Association. A long standing Blackawton based trustee of the charity has decided to stand down in December 2020, creating a vacancy. They happy to pass on their knowledge to a replacement trustee, and to join them at their first few meetings.

Please contact 01752 690444 or [info@ringandride.net](mailto:info@ringandride.net), or see [www.ringandride.net](http://www.ringandride.net), for more information.



Put a  on a child's face and a warm feeling in your  by leaving a  under our  . All the  will be donated to local families via

### TOTNES CONNECTION HUB

[www.totnesconnectionhub.co.uk](http://www.totnesconnectionhub.co.uk)  
please indicate on the present if it is for a boy or girl and the age range



**print&design**  
01803 431 410  
[adrian@tqprintanddesign.co.uk](mailto:adrian@tqprintanddesign.co.uk)  
[www.tqprintanddesign.co.uk](http://www.tqprintanddesign.co.uk)

Unit 1, / The Plains, Totnes TQ9 5DR

To allow time for the presents to be sorted and distributed in time for Christmas the last collection will be  
**MONDAY 14TH DECEMBER**



## DITTISHAM PARISH GROUNDS MAINTENANCE CONTRACT

Quotes are invited for a two year contract plus optional one year extension to maintain grounds owned by Dittisham Parish Council. Contract starts 1 January 2021. The work includes grass cutting, strimming, hedge cutting and ditch clearing.

Further information may be obtained from the Clerk to Dittisham Parish Council:  
01803 722 417 or [parishclerk@dittishamparish.co.uk](mailto:parishclerk@dittishamparish.co.uk)  
Closing date Wednesday 18 November 2020

## OurCountryside Correspondent:

November, the so-called Black Month, is upon us. In the days before easy refrigeration this was when your correspondent's mother prudently laid in food. But in those days, I hasten to say as a very young but observant child the fitches of bacon vied with the Christmas puddings for a place to hang from the beams in the kitchen! An awful lot of food had to be salted, smoked or dried when the ice house 'buried in the garden' was almost the only means of refrigeration! We did not own such a thing as a refrigerator or, for that matter, an ice house, so the big slate slabs in the north-facing larder had to suffice. At the time of writing the clocks will go back very shortly. There are few cattle to be seen the fields and those that are still out are grabbing the last bite of grass before being housed for the winter - all that hay and silage will soon prove its worth.

We now have the quality of the soil much in mind – trampled and compacted soil is a bad thing. Direct drilling is more and more the name of the game and somehow it is difficult to feel sorry for all those seagulls without a plough to follow! Feeders need to be sited so that cattle do not stand knee deep in mud – it is not rocket science to avoid this and even Defra would approve.

It is the time of year when the thoughts of many small country children turn to conkers. Those wonderful shiny 'nuts' which are the fruits of *Aesculus Hippocastanum*, the Horse Chestnut to you and me. It has graced our gardens and the parks of stately homes ever since it was first introduced to this country in the early sixteen hundreds. Once upon a time this glorious tree, which has white or pink 'candles', was native to the mountains of northern Greece and Albania. Like so many trees and plants in these days, when we import stuff from all over the world, the magnificent Horse Chestnut is threatened with disease. The cause is a bacterium called *Pseudomonas Syringae* which was unusual until around 2000. If you see any signs of bleeding canker on a horse chestnut tree report it to the plant health authorities via, I believe, TreeAlert.

Nevertheless, bleeding canker is not the only foe; the Horse Chestnut leaf miner, only first recorded in 2002, has spread very quickly. It is actually a moth and a foreigner to boot rejoicing in the very suitably sounding name of *Cameraria Ohridella*.

Ash Dieback seems to be pretty widespread around the parish and of course the elm trees all went years ago. So 'one by one and silently' the face of the countryside is changed. "Now plough up thy headland, or delve it with spade, where otherwise profit but little is made; And cast it up high, upon hillocks to stand, that winter may rot it, to compass thy land". Not exactly straight from the mouth of Defra but the meaning still holds good today.



## Gardening for Wildlife

After the amazing weather in September we are now moving well into Autumn. The brilliant colours of the dying leaves were spectacular – we hope you enjoyed the show before they all got blown off the trees. Now you can leave them to rot down on the garden or gather them up to put on your compost heap. Talking of which the heap you've built over the past few months will need turning before the creatures that like to hibernate in them take up their Winter residency.

It can be difficult to think about Spring next year. However, the pleasure you get when the first bulbs appear, quite often through frozen earth, helps the descent into Winter a little less daunting. Spring bulbs are often a lifesaver for many insects, particularly bumblebees and honeybees. Snowdrops, winter aconite, muscari (grape hyacinth), bluebells and crocus are all good sources of food. When buying crocus try and include some of the paler colours or those with Latin names as they will attract more insects and allow greater access to the nectar rich pollen. You could plant bulbs in your borders and lawn where they can naturalise and come up year after year. Pots or tubs can be planted with layers of bulbs to give a display for several months eg. Snowdrops, crocus, tete-a-tete daffs and tulips. If you top off the pot with some winter flowering pansies or cyclamen you'll have a pretty display while waiting for the bulb flowers to emerge!

Another great food and nesting source is ivy, which ideally should be left uncut until March. Apart from providing berries and nectar in the winter, it is a great foraging habitat for tits. Also, leaving hedges with berries uncut until the end of winter will provide birds with food to sustain them through the winter. If you are considering planting new shrubs and roses try to choose ones that give you both beautiful flowers and berries or hips. The RHS website is full of great ideas.

So, now that the insects are catered for next spring; the bird feeders and baths are all full; habitats for hibernating wildlife have been created; areas have been left undisturbed you can just sit back and relax, knowing that your garden is taking care of all the unseen but essential wildlife that we take for granted, but who need our help over the coming winter months.

The Capton phone box is now looking very smart thanks to the skill and hard work of Capton resident Jean Luc and the notice board has been spruced up by David. It'll be great when we can put up notices advertising forthcoming events! Many thanks to you both from all of us!



# Paul Jolly

## Motoring Correspondent

### Covid-19 - Effect on values

All kinds of commodities have been affected by an unexpected lift in values, and not just motorcars as you may be surprised to learn a little later.

One of my best indicators for actual values is through my account with British Cars Auctions (BCA) and their subsidiary buying arm, Webuyanycar.com. This outfit has the largest unit number of vehicle disposals per week in the country.

It gives real time, on the day, actual prices paid for motor vehicles and is a reliable thermometer for what is going on in the market.

Lockdown introduced on-line only and account holder only sales, so no members of the public to skew values on the day. Instead of around 22000 car sales per week, this roughly halved but still produced healthy sales as the source from main dealership px's was ongoing.

I was asked by a client to acquire a small hatchback under £5000 and every time I identified a nice example, I was outbid by a good margin. This continued for several weeks to my consternation and surprise. Other dealers were confirming a similar story up and down the country. Nice low mileage cars were making nearer top retail than normal trade money.

So, what was the reason? Well, two-fold. Early on in the pandemic, the motor manufacturers went on a three-day restricted production output across Europe. The new car showrooms rapidly sold out and dealers were clamouring for stock so late low mileages cars held strong values. This demand rippled down through to lower value cars across the range. Good old-fashioned supply and demand. You may recall precisely the same thing happened when the last big recession of 2008 barrelled in and car factory output slowed.

The other disturbing reason I discovered, by chance, was that a vast number of dealers were out spending their recently received grant monies and other government backed easy loans like confetti. 'Unintended consequences' is a term that comes to mind.

Caravans and Motorhomes also shot up in value and demand. This time by buyers denied their usual overseas family holiday and who realised conventional UK holiday destinations were rapidly selling out. I hear new kitchen and bathroom sales are booming for much the same reason. This same phenomenon applied to the luxury boat market.

I recently attended the Historics Classic Car Auction event at Ascot with three client purchases in mind only to find we were outbid each time and in one case, by nearly 100%. Here, the auction is predominantly fuelled by Classic Car investors, not the general public looking for a summer sports car, and so the assumption must be 'safe-haven' destination for their spare cash. Indeed, the sale achieved a

record 80% hammer down rate against a more normal 65% rate and with many new high value records being broken. This was a seller's market.

And the most surprising market I have learnt of is for the trend to buy dogs of mixed breed. With names such as Cockerpoo, Springerpoo, Labradoodle and the like. My recently retired college chum has settled for one of these at a remarkable £1000. When I questioned the logic and sense at such a price, he let me know that such was the demand, the breeders next batch were already sold, at £2000 a pop, per pup.

And I thought they were called Mongrels!

### Cornworthy Parish Council



Monday 5th October 2020 at 8.00 pm Present: Cllrs: Kirkland (Chairman), Bradley, Carver, Fry; Hunt, Matthews, Worthington In Attendance: Linda Maby (Clerk), District Councillor McKay Open Forum: Members of the public were invited to send any representations prior to this meeting by e mail to parishcouncil@cornworthy.com Matters Arising from Minutes Cllr Kirkland advised that the new laptop for the clerk has been purchased at a cost of £549.99. Cllr McKay offered to split the cost of this with Cllr Hawkins. Clerk to pursue/ Lee Marshall, the County Tree Officer is looking into the various issues raised with him regarding Ash Dieback, the pruning of the hedge in the field behind the Hunters Lodge and issues regarding the oak tree on the village green. Highways A meeting has been arranged with Lisa Edmonds from Devon County Highways in Cornworthy to discuss repairs needed to the highway and drainage from the church to Furzehill Cross as well as other highways issues in the parish. This is to be convened on Wednesday 7th October. Planning Applications NB. INFORMATION ONLY The Linhay, Allaleigh Lane, Allaleigh, 3078/20/PDM Application to determine if prior approval is required for proposed change of use of agricultural building to dwelling house (Class C3) and for associated building operations (Class Q(a+b)) Decisions Court Prior Farm, Cornworthy TQ97ES : Change of use and conversion of redundant pool house to single dwelling house 1427/20/FUL CONDITIONAL APPROVAL Lower Washbourne Farm, Washbourne TQ9 7UE: Certificate of Lawfulness for existing use of land for siting and use of three caravans/mobile homes for residential use 2100/20/CLE CERT OF LAWFULNESS (Existing) CERTIFIED Parks Barn, Abbey Road, Cornworthy TQ9 7ET Removal and or variation of conditions 2, 3, 4, 5 and 77 following planning consent 13/1028/14/F 2284/20/VAR REFUSAL Finance Records Bank Balance at 30/9/2020 Total : £ 25,097.21 Current Account :£17,033.80 Savings Account £8,063.41 Allocated: Cornworthy PC: £24,132.32 Charlecombe Wood: £108.01 P3: £856.88 Reports Clerk : clerk advised that the external auditors had raised a few queries with the accounts. One of the issues being how financial reserves are allocated. The clerk outlined the response to be sent to the auditors on this. She suggested that reserves are assessed regularly and will prepare a document for the November meeting on current reserves. District Councillor: Cllr McKay discussed the changing role of the Localities Officer because of the Communities Engagement Strategy. He told the meeting that the first stage of the Planning Paper could happen quite quickly. There was a lot of opposition to this. He advised that the planning application for the barn conversion at Little Venice, Allaleigh is likely to go to mediation. As there are no site meetings at present because of Covid19, Cllr McKay will make a video highlighting the issues with the access and the lane. Matters for November Agenda Cllr Kirkland asked that the idea of the parish council supplying a large Christmas Tree to be located outside the Village Hall be discussed in the next meeting. Clerk to source estimates. 100 October Club Draws 1st: Mr and Mrs Hannaford; 2nd: Mrs J Appleton; 3rd: Miss H Issit The meeting closed at 8.35pm The next Parish Council Meeting is on Monday 2nd November 2020 at 8.00 pm approx. 530 words

## Ashprington Parish Council



Thursday October 1st, 2020 at 7.30 pm held on ZOOM. Present; Cllr B. Lunt {Acting as Chair}, Cllrs: R. Rogers, L. Green, K. Throgmorton, T. Green. Also present Michael Read, Clerk, District Cllr. J. McKay, County Cllr Hawkins, Apologies - Cllr Stocks {Chair} P Thompson {Vice Chair}, P Macey, P3 Co Ordinator. M. Pearey, Tree Warden. The Village Hall is now partially open but only for a limited number of "covid secure" hires. The "QR" code is now displayed. Parish Meetings may well have to be held on Zoom for at least the remainder of this year. Ashprington & Tuckenhay Website. The new website is now complete and operational and compliant 90% of the cost has been met by a generous grant from DCC via Councillor Hawkins. Joanne Rogers has kindly volunteered to post items on the website and to act as administrator. Upkeep of the Cemetery: The first working party organised by Cllr Rogers has met and progress has been made tidying up the cemetery. More work is needed. Parking in Ashprington Cllrs Stocks and Lunt have been assessing the options to this ongoing issue. They have considered narrowing via planters but this is unacceptable to DCC. Yellow lines remain an unpopular option. Cllr Hawkins urged a decision by Christmas if possible. P3 Report Pam Macey is to arrange for strimming in Crownley Woods. Planning 2773/20/LBC Carlyon, Brooking. Listed building consent for repairs/improvements. Support 2858/20/TEX J. Van den Broek. Jasmine Cottage. Fallen tree cut up & Clear. Exempt. 2070/19/FUL Frogmore Orchard. Construction of new property. The owners of the land have lodged an appeal against the ruling of SHDC to turn down the application. The Council agreed to monitor the progress of the appeal which is at a very early stage. Cllr McKay is seeking clarification from the planning office. The Council were Not informed of the appeal. 1992/20/FUL Oates. Conversion & extension of barn into one bed house including integral garage parking and amenity space {resubmission of 1191/19/FUL} The Council has concerns about this application. The applicants have submitted revisions which do not appear to be consistent with the original. The Council voted to write to SHDC reiterating earlier concerns and seeking clarification. District Cllr Report There remain budget concerns at SHDC largely brought on by Covid 19. County Councillor Report. Covid measure continue to be costly and more Government funds are sought. DCC and the Devon District Councils do not support moving to the unitary model. On average 90% of school children attend school and 70 extra buses commissioned. The new Climate Change Officer is now in post and the Council's £400,000 budget maintained. SHDC are concerned regarding changes to planning rules which might mean nearly doubling the number of new houses needing to be built. SHDC decided to spend an extra £240,000 to ensure all leisure centres are open. Ash Meadow Report Finances – the 2019 accounts are under review and will be ready to sign off at the forthcoming AGM; current funds are sufficient to meet all existing commitments committee are investigating likely funding arrangements for 2021/22 to enable forward planning over the next two committee meetings (October and January). Volunteer work parties resumed They have been well supported. The first annual inspection has been carried out by ROSPA, with the report showing some minor repairs required. The Devon Air Ambulance landing site appeal reached its target early in the summer and the lighting is now installed Dripping Well near Frogmore Farm: Cllr L. Green and Chris Bow have received permission to refurbish the old well following the recent adjacent road works. Duncannon Lane. This item was held over until the November meeting. Damage to Verge at SW Water Works. Cllr Hawkins will consult with DCC replacing boulders to deter damage. Arrangements for Remembrance Sunday {November 8th} The Council voted to donate £200 to the British Legion Poppy Appeal an increase on last year due in part to the difficulties faced by the Legion in fund raising due to Covid 19. It was also agreed by vote that £200 should be donated to Citizens Advice in this financial year. Mike Pearey has offered to make "green wreath" and a Tuckenhay resident has agreed to lay the wreath on the War Memorial. Next Meeting on Thursday November 5th, 2020 at 7.30pm remotely on ZOOM. Request access code from the Clerk {email address or telephone below} M.J. Read, Parish Clerk – [spooks49@michaelread.plus.com](mailto:spooks49@michaelread.plus.com). Tel 01803 732047. see website for the full report as space is limited

729 words.

## Dittisham Parish Council



Wednesday 7 October 2020 at 7:00 p.m. Dittisham Parish Council is very pleased to welcome Ros Neale to the Council! Dog Fouling? - DPC wants to take action to reduce the problem with dog poos not being picked up. We would be interested to hear views and suggestions? South Hams District Council Councillor McKay reported that the Localities Task and Finish Group is ongoing. There has been a cross party rejection of the Government's proposed changes to planning policy. Devon County Council Councillor Hawkins reported that the Neighbourhood Officer has raised an issue with debris from hedge cutting not being cleared. Lower Street is on the circuit for resurfacing. Higher Street is also on DCC's list for repairs. There is £750 DCC grant funding available. The first homes at Little Cotton Farm in Dartmouth will be available next spring. A new nursing home is also being discussed for the site nearest the Health and Well-being Centre Leisure Centre. It was agreed at the last Full District Council Meeting to put £243,000 into reopening four District Leisure Centres. The offer from Rotary to plant 900 corms in the autumn was accepted by DPC. The purple crocus symbolises Rotary's efforts to eradicate polio worldwide.

It was agreed the Parish lengthsman will clear blocked road drains in the village, parishioners are encouraged to prepare to alleviate flooding in their property should it be prone to flooding, and parishioners can also be of great help if they can regularly clear any loose debris, particularly leaves, from drain tops adjacent to their properties. Dittisham Sailing Club paper permits will be continued for 2021 and the charge for the permits increased by 20%. New Planning Applications 1105/20/HHO Dartside Manor Street Dittisham TQ6 0EX. READVERTISEMENT (Revised Plans Received) Householder application for construction of ancillary garden building (summerhouse) within rear curtilage. Support subject to an ancillary use condition. Comment about reducing light pollution, and request for a construction method statement. 3075/20/PDM Barns at Capton Dittisham Dartmouth TQ6 0JE. Application to determine if prior approval is required for proposed change of use of agricultural building to 4no. dwellinghouses and associated operational development (Class Q(a+b)). Relevant evidence can be submitted directly to SHDC. 3002/20/ARC Downton Farm Dittisham TQ6 0JD. Dittisham TQ6 0JD. Application for approval of details reserved by conditions 5-10 & 13 of listed building consent 1462/19/LBC, & 3001/20/ARC Downton Farm Dittisham TQ6 0JD. Application for approval of details reserved by conditions 10-15 & 18 of planning consent 1461/19/FUL. Support. 2345/20/HHO Penveron The Level Dittisham TQ6 0ES. Householder application for roof terrace decking and balustrade works. Support. Consultations NALC White paper - Planning for the future. Closes 15 October 2020 Cllr Anderson and the Clerk to write response, in consultation with other councillors.

Department for Transport, Pavement parking: options for change, Closes 22 November 2020. Comment deferred to November meeting of DPC. No comment by DPC on the following: NALC Transparency and competition (land control). Closes 16 October 2020. DCC 2021-2027 Updated Local Flood Risk Management Strategy for Devon. Closes 15 October 2020. SHDC Licensing Act 2003 – Licensing Policy Consultation. Closes 16 October 2020.

The Financial Report, which showed a balance of £67,528.31 and unearmarked reserves of £17,644.01 was adopted. Approved Expenditure: SWW, Quay Standpipe, £40.09 Cllr Bond, Grass Seed, £9.99 Clerk's Expenses Reimbursement CE35 £111.01 VAT payment to HMRC £574.27 Cllr Anderson's expenses reimbursement £21.98 Chapter 8 training, Cllr Bond, £75+VAT Overlay stickers to correct email and website addresses in Car Park signs £20-30. Quote of £100 to remove the remaining Capton Bus Shelter base and make good Expenditure of £250 towards the proposed planting in the Habitat Review with Sustainable Dittisham. Extraordinary Meeting of Dittisham Parish Council held on Wednesday 14 October 2020 at 6:00 p.m. The content of the proposed specifications for the 2021-2022 maintenance contract was agreed. The expenditure of £106.04 plus VAT for a one of cut of the Old Chapel Burial Ground was approved. The next ordinary meeting of Dittisham Parish Council will be held on 4 November 2020 at 7:00 pm using Zoom (joining instructions in the Agenda). Full Minutes, Agendas, and Parish Council contact details are available at <http://www.dittishamparish.co.uk> and on The Level Parish Council noticeboard. Contact details are also on the Capton noticeboard. 698 words

# Earn up to £11,200 for converting to renewable heat energy.

**ARTIZAN**

can replace your existing system with air source heat pump, renewable energy technology.

The Green Homes Grant will pay for a large portion of your heating installation!

**ecodan**<sup>®</sup>  
Renewable Heating Technology

 **MITSUBISHI ELECTRIC**  
Business Solutions Partner



Reduce your carbon footprint



Earn money back from government grants & incentives



Reduce your monthly bills

Claim your no obligation consultation today!

 01803 308008  [office@artizanlifestyle.com](mailto:office@artizanlifestyle.com)

# HELEN'S FURNISHINGS

Helen Isitt  
all soft furnishings  
curtains, blinds, cushions, reupholstering  
01803 732081 / 0791 380 6632  
helens.furnishings@gmail.com

Computers

Smart TVs

Printers

Networking

Mobile Phones

AV Systems

Buying Advice

*\*COVID Precautions Taken\**

**Friendly technical advice, repairs and tutoring**



**Web:** www.dn-tech.co.uk

**Email:** dan@dn-tech.co.uk

**Phone:** 07307 627954

## GARDEN REVIVERS



*Create a new look for your garden*

- Beautiful planting schemes
- Border redesign or refresh • Plant sourcing
- Planting • Garden Feature design
- Advice on plant care and maintenance

Contact Richard or Linda Maby  
RHS Qualified, Chelsea award winners

**Tel: 01803 732731**

www.gwefloral.co.uk email: gwefloral@btinternet.com

## J ELLIOTT

*with helping hands, let me do the jobs you hate*

**JUDY ELLIOTT**

**Cleaning & Domestic Ironing**

4 HARRIS COTTAGES  
VICARAGE RD BLACKAWTON  
TOTNES TQ9 7AX  
Phone: 01803 712347  
mobile 07974965646



## Stanborough Farm

### Christmas Poultry

ORDERS BEING TAKEN NOW

FOR

**TURKEYS, GEESE, DUCKS & CHICKEN**

Covid-19 friendly service

Tel 01548 821306



Christmas this year will be more special than ever, be sure then to serve up one of our birds



Your friendly local Wine Merchant - Buy online or visit our shop in Blackpool Valley

Wines from £7.75 and many under £10 - Free local delivery or pre-order and collect.

Visit our website, send an email or call 01803 770737

**#supportlocal - go on give our wines a try!**

Jonathan & Suzie Sutton

www.michaelsuttonscellar.co.uk

wines@michaelsuttonscellar.co.uk

*move with grace*  
PILATES

UNCOVERING YOUR STRENGTHS FROM THE INSIDE OUT

## PILATES REFORMER STUDIO

Unit 4 Coombe Park | Ashprington | TQ9 7EG

FOR CLASS TIMES & MORE INFO

ONLINE: [www.movewithgrace.co.uk](http://www.movewithgrace.co.uk)

EMAIL: [movewithgracepilates@gmail.com](mailto:movewithgracepilates@gmail.com)

PHONE: 07757 907025



DEVON HEDGELAYERS

HEDGE LAYING TREE SURGERY LOGS FOR SALE

Years of experience in the art of Hedge Laying  
An active member of The National Hedge Laying Society  
Fully insured

Free site visits and quotes. Hedge Laying between October until March, priced per metre.

Tree Surgery priced per job. Let us convert our unwanted or damaged trees into logs ready for the fire hassle free and with the help of our woodchipper ensure that all sites are left clean and tidy



07947 754345

Email: [Devonhedgelayers@hotmail.com](mailto:Devonhedgelayers@hotmail.com)

Plumbing • Servicing • Oil Heating

# A J CROCKER

## PLUMBING

01803 732 986 • 07860 382 933

[www.ajcrockerplumbing.co.uk](http://www.ajcrockerplumbing.co.uk)

Based in Cornworthy and plumbing for over 20 years in the surrounding area.



We have buyers seeking homes in the South Hams

Chartsedge is an Independent Estate Agent in Fore Street, Totnes specialising in selling houses to buyers nationwide who are either looking to relocate or find a holiday home in the Westcountry.

If you are thinking about selling your home and need some inspiration, or your current agent has run out of ideas please contact Gail, Miles or Caroline on the number below.

One client commented:

"We really couldn't have asked for better partners during our move and would recommend Chartsedge wholeheartedly."

01803 505115

[www.chartsedge.co.uk](http://www.chartsedge.co.uk)

The Courtyard  
35 Fore Street,  
Totnes TQ9 5HN



# JOLLY CARS

All your car buying and selling requirements handled with care locally.

Free advice always given.

PAUL JOLLY

[www.jollycars.co.uk](http://www.jollycars.co.uk)

01803 712990



## Dart Valley Cottages

We are a small local company specialising in quality self-catering cottages in this area.

If you would like a copy of our brochure for relatives or friends you are unable to accommodate, or to talk to someone about letting your property as a holiday home, please call:

Christine Clark

Tel: 01803 771127

[enquiries@dartvalleycottages.co.uk](mailto:enquiries@dartvalleycottages.co.uk)

[www.dartvalleycottages.co.uk](http://www.dartvalleycottages.co.uk)



## Kingsbridge Funeral Directors Ltd.

with Adrian Mundy Monumental Mason

Devon Square View  
Lower Union Rd

Kingsbridge  
TQ7 1EF

01548 856340

(24 hours)

A local independent family business for over 20 years



**The Green Man  
Gardener**  
RHS Qualification

Phone Bill Petheram:  
01803 732495 or 07905171525  
thegreenman@petheram.me.uk



**Cattell Construction Ltd**  
Concept to Creation

All aspects of building and  
carpentry undertaken.  
Enquires please contact  
[rhys@cattellconstructionltd.com](mailto:rhys@cattellconstructionltd.com)  
or  
07968859184

**SPECIAL TREATS**  
Simple food made special

We are home cooks, based in Ashprington, who will prepare delicious food for parties, celebrations, family gatherings. We use Devon ingredients and magic them into wonderful dishes for you in your homes.

We prepare smaller dinner parties, provide pre-cooked meals for holidaymakers or create dishes for the freezer. We plan menus with you, do the shopping, and deliver the dishes to your door.

To find out more or to  
discuss catering possibilities  
please call Jill on 01803  
732173 or  
07767 427722

**Professional, affordable,  
local and fully insured.**  
painting, tiling and decorating service.  
Interior or exterior.



Call for a free quote:  
**TOM GREEN**  
01803 732242



www.let-it-out.co.uk

*The flexible approach  
to letting your holiday home*

Gail Critchlow  
07889 628514

Liz Baker-James  
07388 673228

**Get married at  
Sharpham House**

Book your viewing by contacting  
01803 732842  
[housemanager@sharphamtrust.org](mailto:housemanager@sharphamtrust.org)

[www.sharphamtrust.org/weddings](http://www.sharphamtrust.org/weddings)



SharphamTrust



## BEACON ELECTRICAL

DEVON'S LARGEST  
INDEPENDENT  
ELECTRICAL RETAILER

Kitchen Appliances - TV & Audio  
Heating - Wiring - Lighting  
10% OAP discount on small appliances

*Serving Totnes  
with a smile since  
1988.*



**Lowest Prices Guaranteed**  
15 Fore Street, Totnes  
01803 863448

**HEDLEY**

## ELECTRICALS

- Extensive experience in domestic electrical work
- Part P approved
- Extremely competitive prices

Please feel free to contact Robert Hedley

**Call - 07708348741**

robert.hedley@hotmail.co.uk www.hedleyelectricals.co.uk



# Home is where the care is

Home care from  
Bluebird Care

Find out more about home  
care and the difference it  
could make to your life.

[torbay@bluebirdcare.co.uk](mailto:torbay@bluebirdcare.co.uk)  
or call us on 01803 215 999

[bluebirdcare.co.uk/torbay](http://bluebirdcare.co.uk/torbay)

## K JANE GARDEN MACHINERY

NOW SELLING BRAND NEW

Ride-Ons, Mowers, Strimmers & Chainsaws etc  
Repairs and Service to all Garden Machinery

## K JANE GARDEN MAINTENANCE

Grass Cutting, Hedge Cutting, Garden Clearance and  
Contract Work - Call for a Free Quote

Keith Jane  
Elwell Court, Diptford, Nr Totnes

01364 72447  
0779 0362196



## MATT GIBBS

**Qualified Painter and Decorator**

Private or Commercial  
Interior and Exterior  
Realistic prices

Tel 01803 732551 /  
07805977312



A Perfect Combination!



Quality Building, Renovation,  
Property Management and  
General Maintenance

Call Mike Tibbetts today  
for an initial chat  
Tel 01548 521676 / 07968 095337  
Email [info@keystone-property.co.uk](mailto:info@keystone-property.co.uk)  
Visit [www.keystone-property.co.uk](http://www.keystone-property.co.uk)

## Keystone

*Quality Building & Property Management*

A good choice for complete peace of mind...  
[www.keystone-property.co.uk](http://www.keystone-property.co.uk)

## Roger Soper (Tuckenhay) Garden & General Handyman Services

Trading in the local area for over 20 years.

grass mowing  
hedge cutting  
fencing  
power washing (patios, boats, etc.)  
plus much more inside and out.  
No job too small. Ring Roger on  
01803 732617 or 07773488791  
for a free quote.

**Property Repairs**  
**DM Edwards**  
Est 1984

I am a locally based sole trader, established over 30 years. Trusted and reliable.  
Please call now with confidence.  
**07713636251**

Free estimates, no VAT, no call out charge.  
Specialising in:

*Roof repairs*  
*Gutter Cleaning & Installation*  
*UPVC replacement & repair*  
*Cement work*  
*Glazing & Joinery*  
*Holiday Home Maintenance*

## LOGS FOR SALE

Seasoned mixed hardwoods for  
woodburners or open fires

£100 per load (approx.1.2 cubic metre)  
delivered to your door

Call Ric 07846 664680 or  
Donna 07366 363566  
Riverside Farm,  
Cornworthy

**RGC** *Inspirations*  
BUILDING SUPPLIES Kitchens • Bathrooms • Interiors

# KITCHENS

# 75% Off

RRP

Collingwood Road Dartmouth TQ6 9JY  
01803 834622 [rgcbuildingsupplies.co.uk](http://rgcbuildingsupplies.co.uk)

## Footworks Podiatry

1B Castle Street • Totnes • TQ9 5NU

Complete Foot Health & Wellbeing



**Rosanne Hunt**

Bsc (Hons) MChS



Please call:

**01803 868888**

**FOOTWORKS**  
PODIATRY & CHIROPODY



## CORNWORTHY SELF STORAGE

CLEAN, DRY AND SECURE



20ft AS NEW CONTAINERS  
HIGHLY COMPETITIVE RATES

contact:  
01803-732719 or 07836740272

[kelving60@hotmail.com](mailto:kelving60@hotmail.com)

24hr CCTV MONITORING

# EZEBAG

**You Fill it Up - We Pick it Up**

The Easier  
Way to  
Clear Away  
Your Rubbish



from  
**£95**

Including bag  
delivery & collection

**ezebag.co.uk 01803 834622**

HOUSEHOLD • GARDEN • DIY • GENERAL BUILDING

# Brooking B&B



## Pearse's Cottage (self catered) Ashprington

Tel (01803) 731037

Email: [w.carlyon@btinternet.com](mailto:w.carlyon@btinternet.com)

[www.brooking-ashprington.co.uk](http://www.brooking-ashprington.co.uk)



### ROADRUNNER TAXIS TOTNES

BASED IN ASHPRINGTON  
ANY DISTANCE - ANYTIME  
AIRPORTS - SEAPORTS  
LADY DRIVER AVAILABLE  
24 HOUR BOOKABLE SERVICE

TEL: 01803 732834

[WWW.ROADRUNNERTAXISTOTNES.CO.UK](http://WWW.ROADRUNNERTAXISTOTNES.CO.UK)



## SPORTSMAN'S ARMS

*A local country pub*

**Wednesday Carvery Lunch**  
Choice of two meats  
served 12 - 2pm

### SPECIAL OFFER:

Buy one get one free

Offer available every Wednesday

Tables must be booked before

Tuesday midday .

01803 712231



[www.thewatermansarms.net](http://www.thewatermansarms.net)

Leslie and Sarah welcome you to enjoy  
traditional food and a well kept range of  
ales by the river at Bow Bridge.  
15 available B&B rooms refurbished.

01803 732214

T99 7EG



## Taste the Experience!

Fine English wine & cheese, produced from our  
Estate on the banks of the River Dart.

Tours are available which include a wine tasting.  
Alfresco dining in summer.



01803 732203

[www.sharpham.com](http://www.sharpham.com)



South West Producer  
of the year 2014  
Taste West

**SHARPHAM**  
WINE & CHEESE



## HUNTERS LODGE

" Sue & Grahame wish everyone a  
warm welcome to the newly reopened  
Hunters Lodge Inn , Cornworthy.

Good Ales, Good Wines, Homemade Food  
and Excellent

Bed & Breakfast accommodation"

01803 732204

# Directory

## Clergy

### Team Rector, Totnes Team Ministry

Team Rector : Rev'd Jim Barlow 07775356652 [fr.jim@totnesrectory.co.uk](mailto:fr.jim@totnesrectory.co.uk)  
 Rev'd. Deborah Parsons, 01803 840113 [deborah@totnesrectory.co.uk](mailto:deborah@totnesrectory.co.uk)  
 Licensed Reader, Liz Waterson, 849345, [liz.waterson29@gmail.com](mailto:liz.waterson29@gmail.com)  
 Licensed Reader, Tony Gregg, 813885 [a.gregg29@btinternet.com](mailto:a.gregg29@btinternet.com)  
*Jim's day off is Saturday and Deborah's day off is Friday.*

### The United Benefice of Dartmouth and Dittisham

The Rev'd. Robert Boyle 16 Southford Road, Dartmouth TQ6 9QS  
 01803 361379 [assocpriest@dartmouthanddittisham.co.uk](mailto:assocpriest@dartmouthanddittisham.co.uk)  
 The Revd. Andrew Langley, 22 Church Road, Dartmouth TQ6 9HQ  
 01803 834430 [curate@dartmouthanddittisham.co.uk](mailto:curate@dartmouthanddittisham.co.uk)  
 Benefice Office: St Saviour's Church, Dartmouth Mon-Thurs 9:30 -5pm  
 Tel: 835540 Sect. Jill Cawley [office@parishofdartmouth.co.uk](mailto:office@parishofdartmouth.co.uk)

## St. Peter's Cornworthy

### Churchwarden

Caroline Hunt 4 Green Close, Cornworthy 01803 732 626

### Treasurer

Michael Hasler, 15 Priory View, Cornworthy TQ9 7HN  
[mijh44@gmail.com](mailto:mijh44@gmail.com) 01803 732817.

### PCC Secretary

Marilyn Fry 01803722280  
[frymarilyn@hotmail.com](mailto:frymarilyn@hotmail.com) - preferred contact

## Methodist Church

Minister for Cornworthy and Ashprington

The Reverend Verity Phillips

## Calendar for November

## St David's Ashprington

website: <https://ashpringtonchurch.org/>

1 November	Eucharist	11:15
8 November	Remembrance Village Worship service at memorial 10:50 am	11:15
15 November	Eucharist	11:15
22 November	Village worship at Cornworthy	9:15

## St Peter's Cornworthy

1 November	Eucharist	9:15
8 November	Remembrance Eucharist	9:15
15 November	Eucharist at Ashprington	11:15
22 November	Village Worship	9:15

## St George's Dittisham

1 November	Eucharist	9:15
8 November	Remembrance Village Worship	10:55
10 November	BCP Holy Communion	9:30
15 November	BCP Holy Communion	9:15
22 November	Eucharist	9:15
24 November	Morning Prayer	9:30
29 November	Evening Prayer (Advent)	4:30pm

## St. David's Ashprington

### Churchwardens:

Richard Soans Cox's Farm, Strete, Dartmouth. 01803 771189.  
 Laurence Green, 8 Holly Villas TQ9 7UU 01803 732437  
 Simon Boyes (Churchwarden Emeritus) Woodleigh,  
 9 Church Close, Ashprington. 01803 732103.

### Treasurer

Kathi Green 8 Holly Villas, Ashprington. 01803 732437.

### PCC Secretary

David Davies, Morlanda, Ashprington. 01803 732109.

## St. George's Dittisham

### Churchwardens

Charlotte Anderson, 5 The Follym Riverside Rd. TQ6 0HS 01803 722220  
 Peter Smyth, 26 Dittisham Court, TQ6 0HS 01803 722424

### Treasurer

John Wells Lapwing Cottage, Manor Street, 01803 722414

### PCC Secretary

Patricia Hodson, 22 Dittisham Court, Riverside Road, TQ6 0HS 722447  
 email [gt@wyralla.plus.com](mailto:gt@wyralla.plus.com)

## West Dart Bus

(Dittisham-Dartmouth, Totnes, N'ton Ab't)

Friday departs Dittisham 9:20 am from Level car park 9:30 from Church.  
 Return departs Dartmouth 12:00 Fare £2.50 each way. Every last Wed to  
 Newton Abbot 9:30 from bus stop. Return departs N. Abbot 1:30 fare  
 £3.50 each way. Timetable at Bus stop or contact  
 Tony Hemmings 07776432309

## ALL VILLAGE DEFIBRILLATORS

## Remember in a suspected cardiac emergency FIRST CALL 999

### ASHPRINGTON & TUCKENHAY

Public access (unlocked) defibrillators are situated in the phone kiosk, Ashprington and Maltster's Arms, Tuckenhay.

Call the Volunteer Emergency Telephone System  
**(VETS) 01803 500535**

The VETS volunteer will bring the defibrillator and assist with CPR.

### CORNWORTHY

IN YELLOW CABINET ON OUTSIDE WALL of  
 CORNWORTHY VILLAGE HALL

A LIST OF TRAINED PARISHIONERS IS WITH THE DEFIBRILLATOR. FREE TRAINING CONTACT:  
 CLLR. KIRKLAND 732877

### DITTISHAM

Public access (unlocked) defibrillators are located outside  
 The Red Lion Inn and The Ferry Boat Inn.

For any maintenance issues with the defibrillators, please contact Cllr Richard Bond on 07813171773.